



BaoLong Outdoor

Since 1996

Taizhou
Pu'ao Village Donggang
Development Zone, Silin Sanmen
317106, Taizhou Zhejiang

Hangzhou
Room 306, 8 Yan'An Road,
Tianfeng Mansion
Hangzhou, Zhejiang
China

California
1139 Westminster Avenue
Unit D,
Alhambra, CA 91803

Germany
Poetenweg 50, 33619 Bielefeld



BaoLong Outdoor

Since 1996

Unleash adventure with our essentials!

- Camping
- Gardening
- Outdoor Furnitures
- Sports & Accessories



Visit Us:
<https://www.zj-baolong.com/>

Contact Us:
E-mail: baolong@zj-baolong.com
Tel: 86(571)-87801927/87030673
Fax: 86(571)-87039253

Zhejiang Baolong Camping Products Co.,Ltd

Embark on **30 years** of excellence in outdoor innovation with us
-- your trusted **manufacturer** for a diverse range of
waterproof products!

About Us Baolong - Since 1996

Welcome to Baolong Outdoor – Your Source for Premium Outdoor Gear Since 1996.



With 30+ years of expertise, we partner with global giants like Walmart and Aldi.

And our research team is always ready to innovate with you for unforgettable outdoor experiences!



For more information, please visit <https://www.zj-baolong.com/>

What We Do Baolong - Since 1996

Professional Customization, Flawless Execution:
we Design & Manufacture & Process & Represent Sales

1996
Founded in
Taizhou, Zhejiang

2003
Opened 1688 Store

2006
Opened Alibaba
Store

2010
Cooperated with **Lidl**

2012
Established
Hangzhou Sales
Office

2013
Cooperated with
Walmart

2015
Won the **CF Silver
Awards**

2021
Cooperated
with **Aldi**
Established
California Sales
Office

2024
Established
Germany Sales
Office

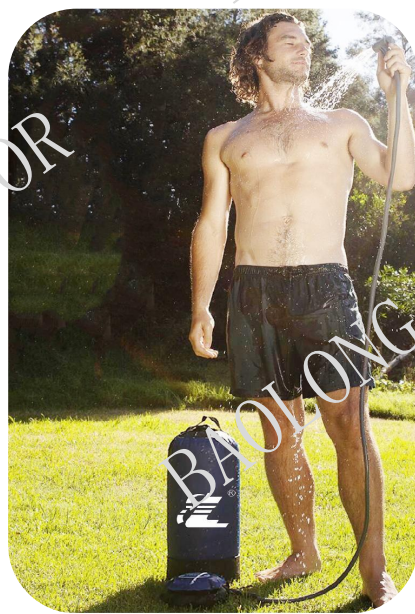


**Pressure shower
PW1027**

Capacity:11L
Material:500D PVC Tarpaulin
Color:Black/Grey/Blue/Red

Features:

- Ground placement, 5-7 mins of stable pressure.
- Solar-heated water at 50°C.
- Portable, compact, and ventilated for dry storage



Our **patented** designs have won hearts and claimed a significant market share, thanks to innovation, reliability, and outdoor convenience.



Invention Patent No.:201410286294.9
Utility Model Patent No.:20140725320.9

Versatile and instant, our **Pop-Up Privacy Tent** is your go-to solution for outdoor showers, changing rooms, and more.

Easy setup, **dual-sided zippered door**, and convenient portability redefine on-the-go privacy.

Material: 190T polyester PU coating
Size: 120*120*190cm

Privacy on the go
Unfolds in **seconds**
Folds into a bag for **convenience**

Camp Shower

Features: Solar-heated water, stylish designs, and customizable features for the perfect on-the-go hygiene solution.
Color: Black/Blue/Red/Orange/Green



C1004A
Capacity: 10L/15L/20L
Material: PVC



C1028
Capacity: 25L
Material: PVC/Coating Polyester



C1021
Capacity: 20L
Material: PVC/Coating Polyester



Pocket Shower - Shower Anywhere, Anytime

Features: Lightweight, Doubles as Dry Sack. Carry Essentials Seamlessly and Enjoy Refreshing Showers On-the-Go, All in One Compact Design.
Color: Black/Dark Blue/Blue



S3015
Capacity: 10L
Material: PVC



S3016
Capacity: 10L
Material: PVC

Waterproof Bag

Features: Compact, versatile, and essential for all your journey.
Color: Black/Blue/Red/Orange/Green/Grey/Transparent



S2012
Capacity: 5L to 50L
Material: PVC Tarpaulin/PVC coating polyester



98015
Capacity: 10L
Material: EVA



98007
Capacity: 10L/15L/20L
Material: PE



Camping Cooler Bag - Keep Cool, Stay Fresh

Features: Your Essential Companion for Fresh Food and Beverage Storage on Every Adventure.
Color: Black/Blue/Grey/Green/Mint



G2022
Capacity: 10L to 30L
Material: 500D PVC Tarpaulin



G2023
Capacity: 10L to 30L
Material: 500D PVC Tarpaulin



K2022
Capacity: 10L to 20L
Material: 500D PVC Tarpaulin



K2023
Capacity: 10L to 20L
Material: 500D PVC Tarpaulin



Water Bladder:

Features: The perfect On-the-Go Hydration and Convenience.
Color: Black/Grey/Blue



W2018
Capacity: 2L
Material: PVC/TPU



W4017
Capacity: 2L/3L
Material: PVC/TPU



W2012
Capacity: 1.5L
Material: PVC/TPU



W2017
Capacity: 2L
Material: PVC/TPU



Garden Cottage

GC01

Accessories: Summer & Winter Canopy for All Seasons

Material: HDPE&PVC



Details:

Volume:16m³

Max Height:2.2m



Diameter:3.6m

Base Area 10m²

Transform Your Garden into a Cozy Retreat or a Perfect Leisure Haven, Anytime, Any Season!



Step into Serenity: Your Garden Tent Retreat Awaits

Features: Durable construction and ample space for relaxation and outdoor gatherings.



Garden Tent-GT017

Material: 210d Oxford Fabric

Frame: Fibre glass pole



Garden Tent-GT018

Length of side: 140cm

Base Area: 5m²



Garden Tent-GT019

Material: 210d Oxford Fabric

Frame: Fibre glass pole



Air Tent-AT001

Material: Oxford&PVC Tarpaulin

Size:320*200*200cm

Rain Barrel: Eco-friendly garden hydration

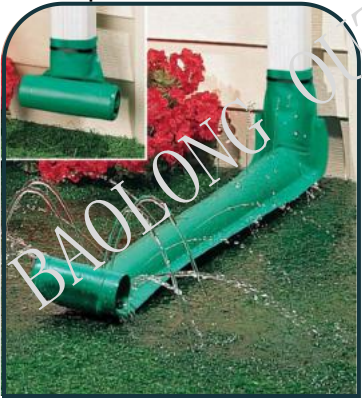
Features: Collect rainwater effortlessly, reduce water bills, and enhance your garden with the pure, natural water it deserves.



Rain Barrel
Capacity: 25L to 1000L
Material: UV-resistant 500D PVC tarpaulin



Tree Watering Bag - C1025
Capacity: 75L
Material: PVC/PVC Tarpaulin



Automatic Rain Diverter - DC001
Length:39/120/360cm
Material: PVC/PE



Tree Watering Bag - C1026
Capacity: 10L
Material: PVC



Water Carrier:

Features: Shapes and Sizes for Every Adventure, Perfect for Hydration and More.
Color: Black/Blue/Acid Blue/Green



98012
Capacity: 10L/15L/20L
Material: PVC Tarpaulin



98015
Capacity: 10L/15L/20L
Material: PVC Tarpaulin



Portable Furniture Air Sofa

Meet our **Self Infalted/Defalted Air Sofa**

- Effortlessly inflatable and deflatable
- Portable and foldable



SF02: supporting up to 200kgs/440lbs



Footstand



SF01: supporting up to 100kgs/220lbs



Build-in Electric Pump

Portable Furniture Car Air Bed

Rest and recharge wherever your journey takes you with the ultimate convenience of our **Self Infalted/Defalted Car Air Bed.**

- Built-in electric pump for effortless inflation and deflation.
- Transform your car into a comfortable sleeping space in minutes.



CB02:
supporting up to 200kgs/440lbs

CB01:
supporting up to 100kgs/220lbs



Fitness Water Bag:

Feature: Easy to set up, portable, customizable! Exercise whenever, however, and wherever you want!

Material: PVC/PVC Tarpaulin

Capacity: 3L/15L/25L

Easy to Set Up:

Step 1: open the water injection cap

Step 2: Add appropriate amount of water according to fitness needs



Step 3: Inflate with an air pump

Step 4: Close the water cap and start working out

Portable

Fit into your handbag!



Customizable:

Add your favorite color!



Water Weight Bag:

Your Portable Partner for Camping and Beyond. Convenient, Reusable, and Packable.



Water Weight Bag - WB7

Capacity: 10L

Material: PVC Tarpaulin



Water Weight Bag - WB8

Capacity: 10L

Material: PVC



Accessories Foot Pumps

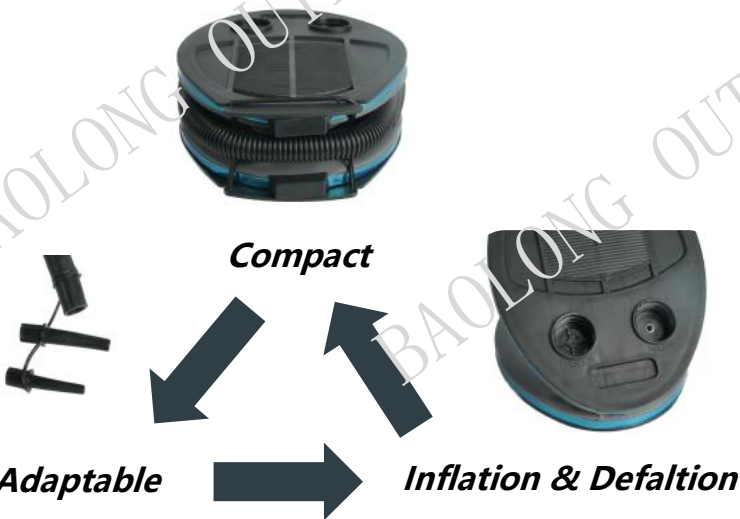
Foot Pumps: Easy, compact, and adaptable for quick inflation and deflation on the go



Foot Pump
Capacity: 3L/5L/7L/8L
Material: PVC



Foot Pump
Capacity: 3L/5L/7L/8L
Material: Oxford



Accessories Hand Pumps

Hand Pumps: Easy, compact, and adaptable for quick inflation and deflation on the go.



Hand Pump
Capacity: 1500/2000/3000cc
Material: PP



Hand Pump
Capacity: 1500/2000/3000cc
Material: Stainless Steel



Double action!



Electric Pumps: Effortless Inflation: Power up your gear with our Electric Pumps.



98019B-2
AC: 120-240V, DC: 12V
50Hz, 60W, 17000revs/min
With 3 nozzles

***Includes 3 Nozzles to
Suit Your Inflation Needs!***



1: Small Nozzle

For inflatable toys, swim rings,
and etc.



2. Medium Nozzle

For inflatable pools, sleeping
pads, and etc.



3. Large Nozzle

For air mattresses, inflatable
houses, boats, and etc.



98019A
DC: 12V, 50Hz, 20W
With 3 nozzles

With **global** partnerships, we offer premium gear crafted with precision.

Valuing innovation, we continuously improve, ensuring access to the latest advancements. Join us on a journey of exploration and discovery!

We work with: Global Retail Chains:

- Walmart
- ALDI
- LIDI

.....

Our Principal Market



Contact us for more information!